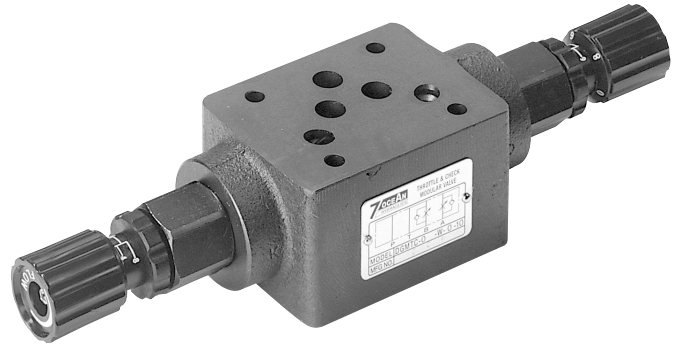


# FLOW REGULATOR WITH CHECK VALVE

## SANDWICH PLATE DESIGN MTC03 SIZE 10

### FEATURES :

- Highest performance in NG 10
- Sandwich plate design
- For limiting the main or pilot fluid flow of 2 actuator connections
- For meter-in or meter-out control
- Connections to DIN, ISO and CETOP



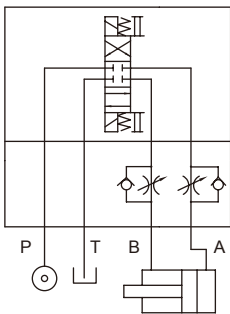
### SPECIFICATION :

**Model:** MTC-03-W-O-10

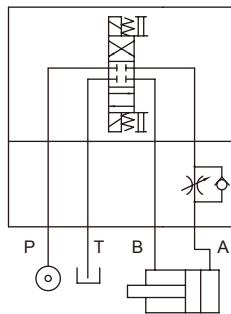
Maximum Flow Rate		100 l/Min (26.5 GPM)
Maximum working pressure		320 Bar (4570 PSI)
Check valve cracking pressure		1.0 Bar (14.3 PSI)
Ambient Temperature Range		-20°C ~ +50°C
Hydraulic Fluid Temperature Range		-20°C ~ +70°C
Viscosity Range		15~400 mm <sup>2</sup> /S
Hydraulic Oil		ISO VG32, 46, 68
Fluid Cleanliness		25 μm
Mounting Pattern		ISO 4401-AC-05-4-A
Weight	W Type	3.1 kg
	A Type	3.0 kg
	B Type	3.0 kg

### HYDRAULIC CONFIGURATION:

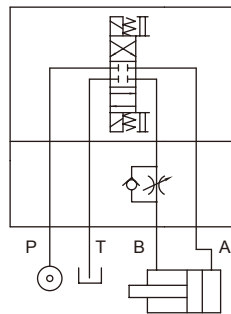
■ MTC-03-W-O-10



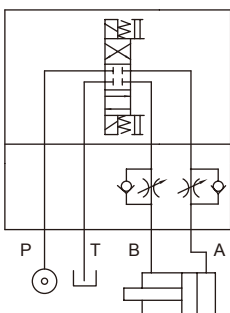
■ MCT-03-A-O-10



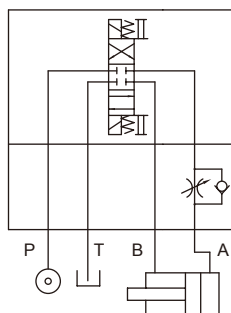
■ MTC-03-B-O-10



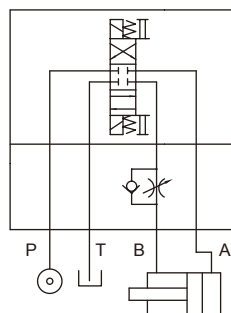
■ MTC-03-W-I-10



■ MCT-03-A-I-10



■ MTC-03-B-I-10



## FLOW REGULATOR WITH CHECK VALVE SANDWICH PLATE DESIGN MTC03 SIZE 10

ORDERING CODE :

M TC - 03 - W - O - 10 - \*\*

1 2 3 4 5 6 7

- 1 SANDWICH PLATE DESIGN
- 2 FLOW REGULATOR WITH CHECK VALVE
- 3 NOMINAL VALVE SIZE:

NG 10, CETOP 5 and ISO 4401-05 (NFPA-D05/DIN 24340)

### 4 CONFIGURATION

W: double; acting on ports A & B  
 A: single; acting on port A  
 B: single; acting on port B

### 5 CONTROL WAY

O : Meter out, control of flow discharged from the actuator  
 I : Meter in, control of flow entering the actuator

### 6 DESIGN NUMBER

10: with handle  
 20: without handle

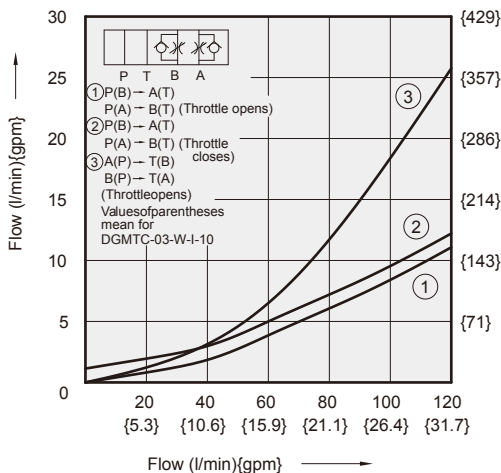
### 7 OPTIONAL INQUIRY

## PERFORMANCE CURVES:

Viscosity of Hydraulic Fluid: 32 mm<sup>2</sup>/s

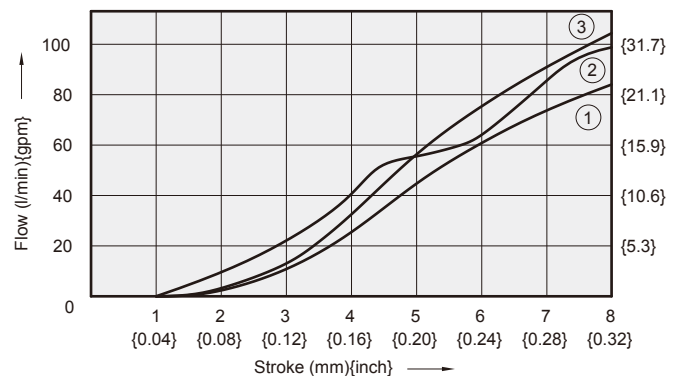
### Pressure Drop Characteristic

- MTC-03-W-O-10  
(MTC-03-W-I-10)



### Stroke V.S. Flow Diagram

- MTC-03-W-O/I-10  
MTC-03-A-O/I-10  
MTC-03-B-O/I-10



- ① Pressure Difference = 10 bar {143psi}
- ② Pressure Difference = 15 bar {214psi}
- ③ Pressure Difference = 50 bar {714psi}

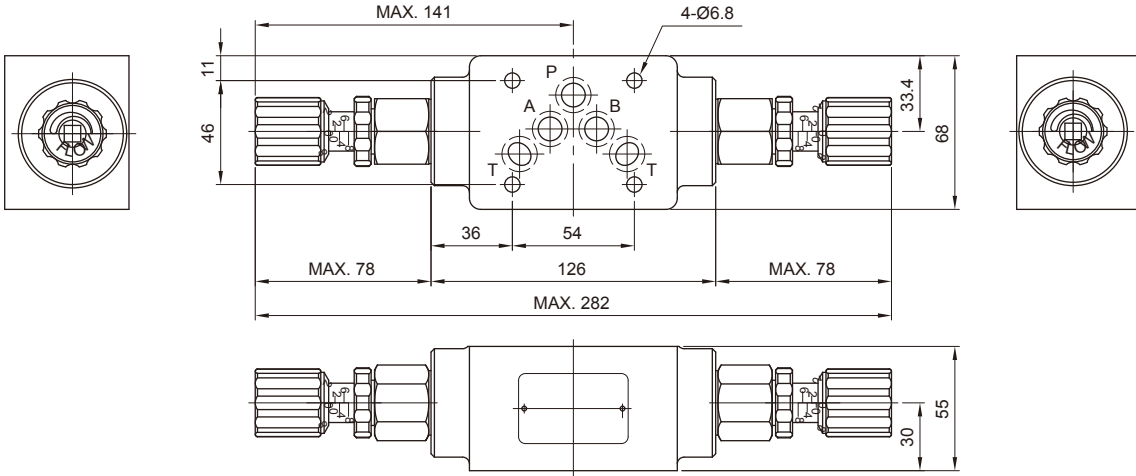
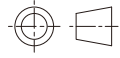
# FLOW REGULATOR WITH CHECK VALVE

## SANDWICH PLATE DESIGN MTC03 SIZE 10

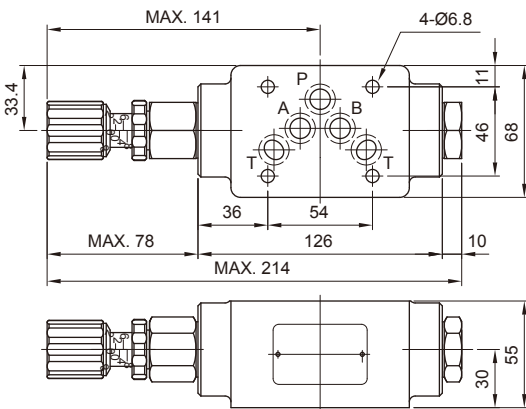
DIMENSIONS :

■ MTC-03-W-O-10

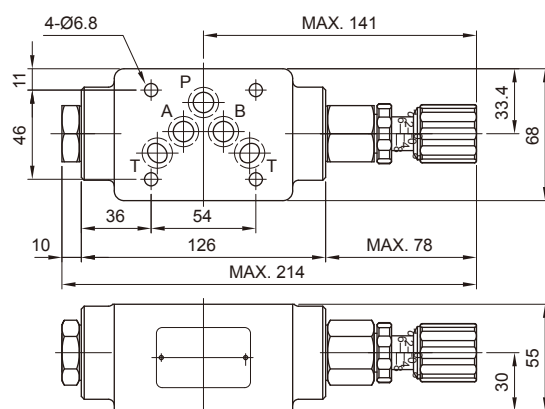
3rd angle projection



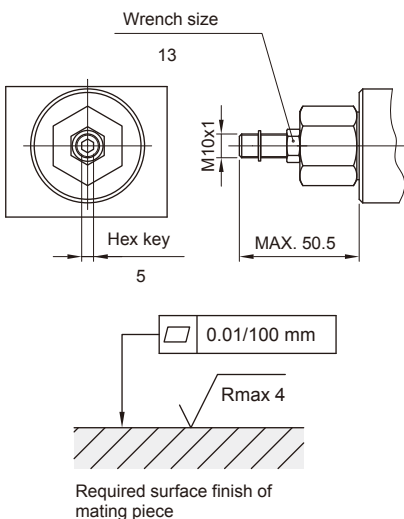
■ MTC-03-A-O-10



■ MTC-03-B-O-10

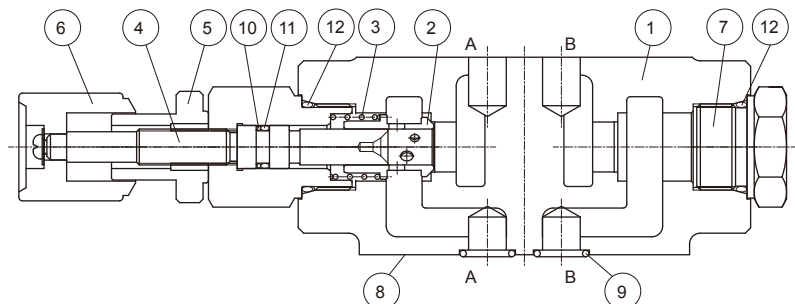


■ MTC-03-\*O-20



### CROSS SECTION DRAWING :

■ MTC-03-B-O-10



- 1.Body
- 2.Throttle
- 3.Spring
- 4.Setting screw
- 5.Locking nut
- 6.Adjustment element
- 7.Bushing

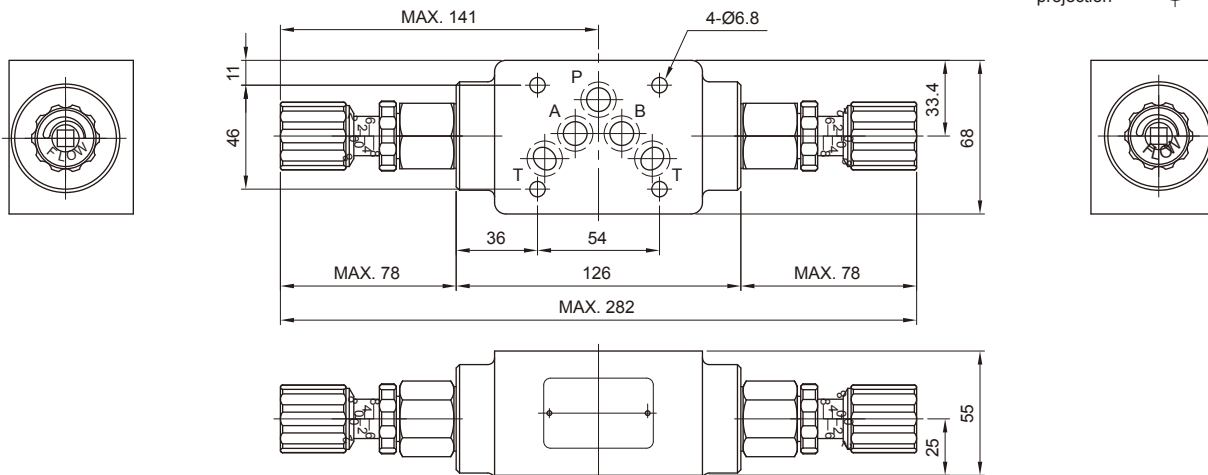
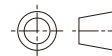
- 8.Connections to DIN 24340 from A10; valve fixing screws M6x90 DIN 912-10.9, tightening torque 12~15 Nm
- 9.O-ring AS586-014(Hs90) for ports A,B,P and T
- 10.O-ring BU-P9
- 11.O-ring 1A-P9
- 12.O-ring 1B-P22

## FLOW REGULATOR WITH CHECK VALVE SANDWICH PLATE DESIGN MTC03 SIZE 10

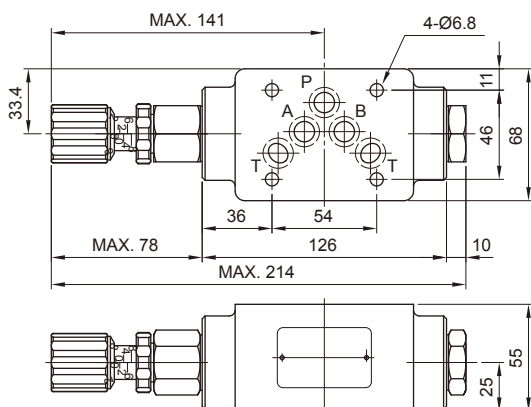
DIMENSIONS :

■ MTC-03-W-I-10

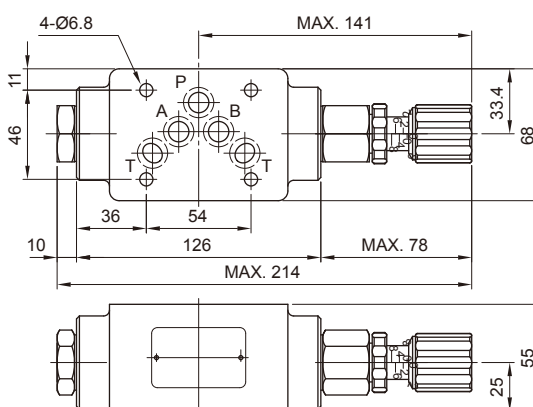
3rd angle projection



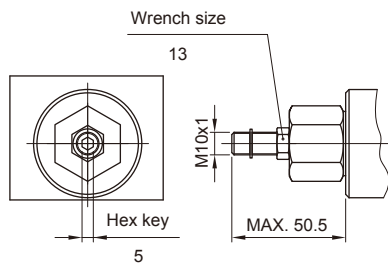
■ MTC-03-A-I-10



■ MTC-03-B-I-10



■ MTC-03-\*-I-20



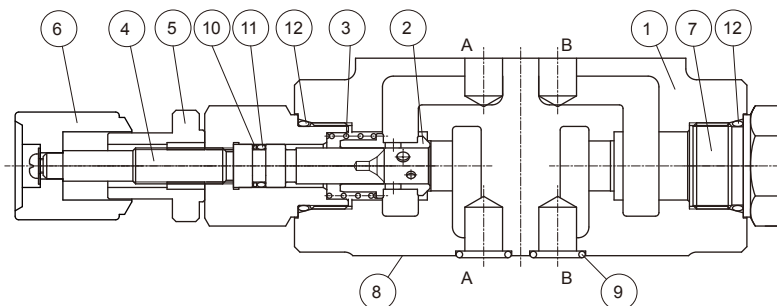
0.01/100 mm

Rmax 4

Required surface finish of mating piece

### CROSS SECTION DRAWING :

■ MTC-03-A-I-10



- |                       |  |
|-----------------------|--|
| 1. Body               | 8. Connections to DIN 24340 from A10; valve fixing screws M6x90 DIN 912-10.9, tightening torque 12~15 Nm |
| 2. Throttle           | 9. O-ring AS586-01 4(Hs90) for ports A,B,P and T   |
| 3. Spring             | 10. O-ring BU-P9   |
| 4. Setting screw      | 11. O-ring 1A-P9   |
| 5. Locking nut        | 12. O-ring 1B-P22  |
| 6. Adjustment element |  |
| 7. Bushing            |  |