

PILOT OPERATED CHECK VALVE WITH DECOMPRESSION SANDWICH PLATE DESIGN MPD02 SIZE 6

FEATURES :

- Highest performance in NG 6
- Sandwich plate design
- Pilot operated check valve with decompression
- For leak free sealing of one or two actuator port
- Connections to DIN, ISO and CETOP

SPECIFICATION :

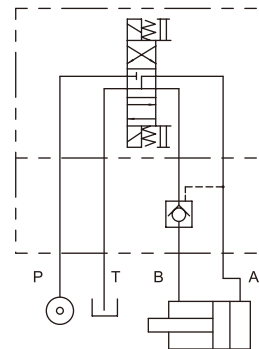
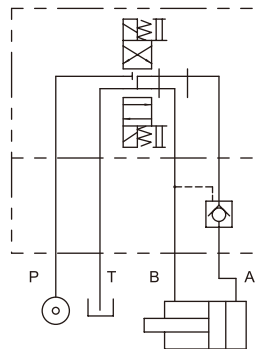
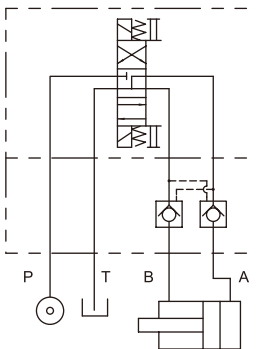
Maximum Flow Rate		50 l/Min (13.2 GPM)
Maximum working pressure		320 Bar (4570 PSI)
Spring cracking pressure		1: 2 Bar (29 PSI) 2: 5 Bar (71 PSI)
Area ratio	Pilot piston	1
	Check valve seat	0.51
	Needle valve seat	0.06
Ambient Temperature Range		-20°C~+50°C
Hydraulic Fluid Temperature Range		-20°C~+70°C
Viscosity Range		15~400 mm ² /S
Hydraulic Oil		ISO VG32, 46, 68
Fluid Cleanliness		25 μm
Mounting Pattern		ISO 4401-AB-03-4-A
Weight	W Type	1.2 kg
	A Type	1.2 kg
	B Type	1.2 kg

HYDRAULIC CONFIGURATION:

■ MPD-02-W-*-10

■ MPD-02-A-*-10

■ MPD-02-B-*-10



PILOT OPERATED CHECK VALVE WITH DECOMPRESSION

SANDWICH PLATE DESIGN MPD02 SIZE 6

ORDERING CODE :

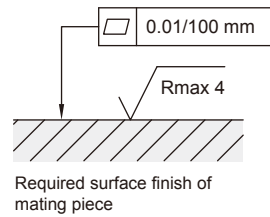
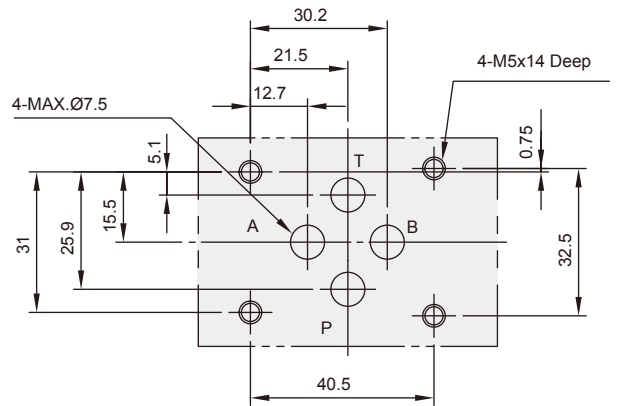
M PD - 02 - W - 1 - 10 - **

1 2 3 4 5 6 7

- 1 SANDWICH PLATE DESIGN
- 2 PILOT OPERATED CHECK VALVE WITH DECOMPRESSION
- 3 NOMINAL VALVE SIZE:
NG 6, CETOP 3 and ISO 4401-03 (NFPA-D03/DIN 24340)
- 4 CONFIGURATION
W: double; acting on ports A & B
A: single; acting on port A
B: single; acting on port B
- 5 SPRING CRACKING PRESSURE
1: 2 Bar
2: 5 Bar
- 6 DESIGN NUMBER
- 7 OPTIONAL INQUIRY

INSTALLATION DIMENSIONS:

(Machined valve mounting face with position of ports)

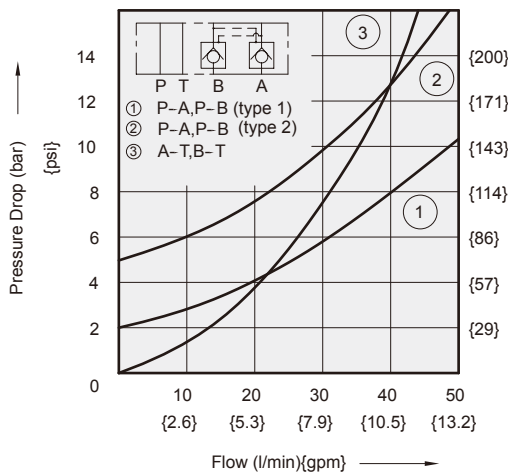


PERFORMANCE CURVES:

Viscosity of Hydraulic Fluid: 32 mm²/s

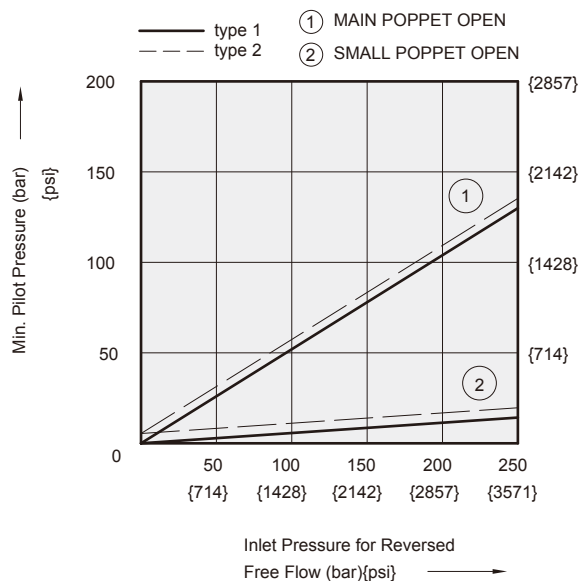
Pressure Drop Characteristic

■ MPD-02-W-*-10



Min. Pilot Pressure Characteristic

■ MPD-02-W-*-10

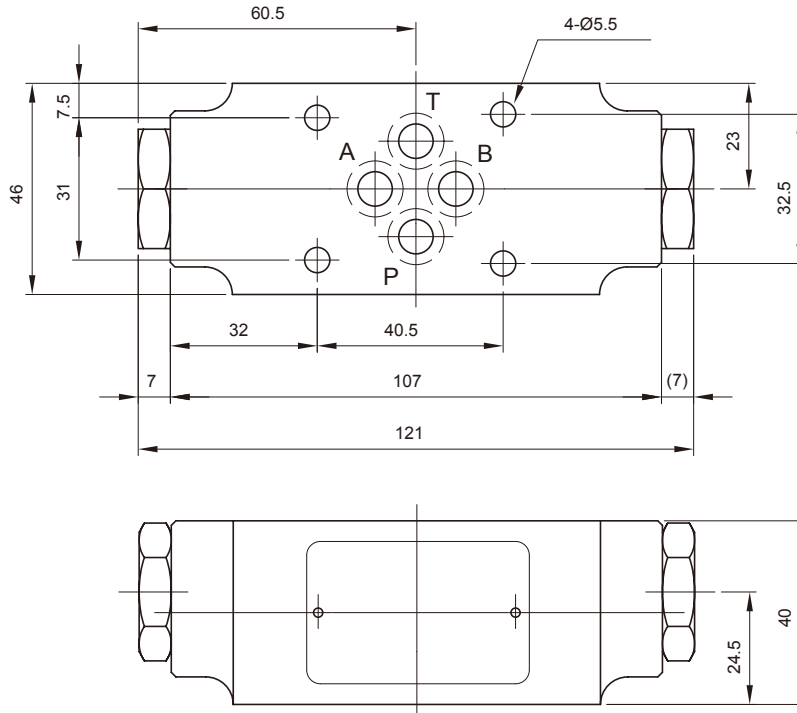
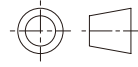


PILOT OPERATED CHECK VALVE WITH DECOMPRESSION SANDWICH PLATE DESIGN MPD02 SIZE 6

DIMENSIONS :

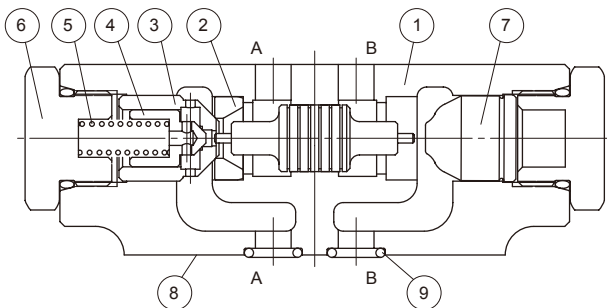
- MPD-02-W-*-10
- MPD-02-A-*-10
- MPD-02-B-*-10

3rd angle
projection



CROSS SECTION DRAWING :

- MPD-02-A-*-10



- | | |
|-------------|--|
| 1. Body | 7. Bushing |
| 2. Seat | 8. Connections to DIN 24340 from A6; valve fixing screws M5 DIN 912-10.9, tightening torque 8~9 Nm |
| 3. Poppet 1 | 9. O-ring 1B-P9 for ports A, B, P and T |
| 4. Poppet 2 | |
| 5. Spring | |
| 6. Nut | |