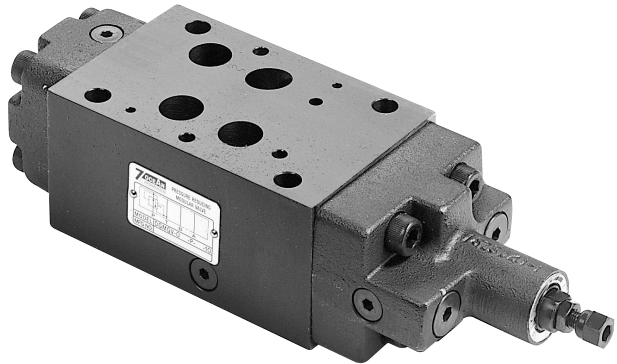


PRESSURE REDUCING VALVE

SANDWICH PLATE DESIGN MGVO4 SIZE 16

FEATURES :

- Highest performance in NG 16
- Double stage pressure reducing valve
- Sandwich plate design
- 3 pressure adjusting ranges.
- 3 optional effective directions of flow
- Pressure reduction in ports A, B, or P
- Connections to DIN, ISO and CETOP



Model: MGV-04-P-1-20

SPECIFICATION :

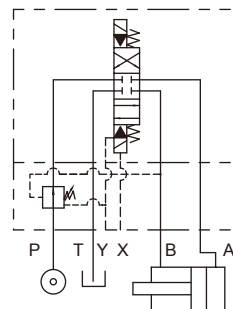
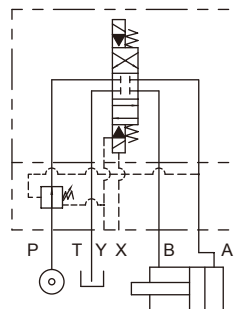
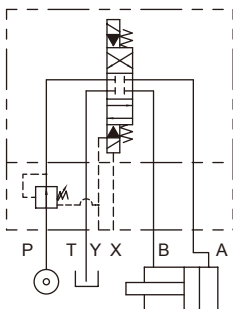
Maximum Flow Rate		300 l/Min (79.3 GPM)
Maximum working pressure		320 Bar (4570 PSI)
Pressure Adjusting Range		1: 7~70 Bar
		2: 7~140 Bar
		3: 7~210 Bar
Ambient Temperature Range		-20°C~+50°C
Hydraulic Fluid Temperature Range		-20°C~+70°C
Viscosity Range		15~400 mm ² /S
Hydraulic Oil		ISO VG32, 46, 68
Fluid Cleanliness		25 μm
Mounting Pattern		ISO 4401-AD-07-4-A
Weight	P Type	8.6 kg
	A Type	8.6 kg
	B Type	8.6 kg

HYDRAULIC CONFIGURATION:

■ MGV-04-P-*-20

■ MGV-04-A-*-20

■ MGV-04-B-*-20



PRESSURE REDUCING VALVE

SANDWICH PLATE DESIGN MGVO4 SIZE 16

ORDERING CODE :

M GV - 04 - P - 1 - 20 - **

1 2 3 4 5 6 7

1 SANDWICH PLATE DESIGN

2 PRESSURE REDUCING VALVE

3 NOMINAL VALVE SIZE:

NG 16, CETOP7 and ISO 4401-07 (NFPA-D07/DIN 24340)

4 CONFIGURATION

P: reduced pressure on P port

A: reduced pressure on A port

B: reduced pressure on B port

5 SPRING CRACKING PRESSURE

1: 7~70 Bar

2: 7~140 Bar

3: 7~210 Bar

6 DESIGN NUMBER

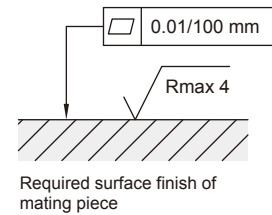
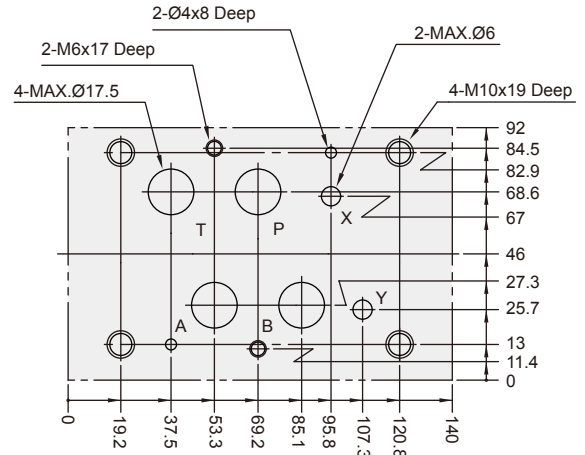
10: with handle

20: without handle

7 OPTIONAL INQUIRY

INSTALLATION DIMENSIONS:

(Machined valve mounting face with position of ports)
Mounting Surface: ISO 4401-AD-07-4-A

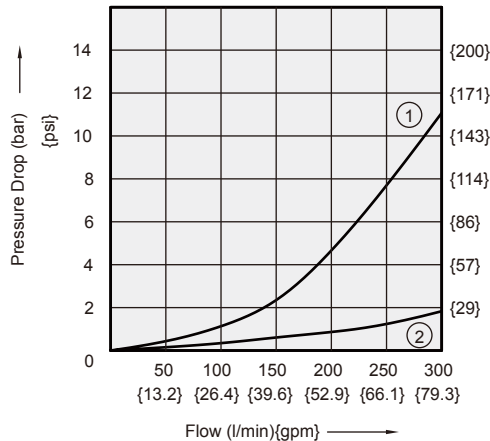


PERFORMANCE CURVES:

Viscosity of Hydraulic Fluid: 32 mm²/s

Pressure Drop Characteristic

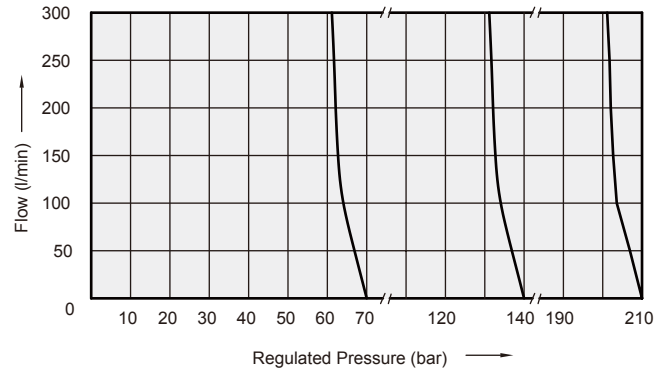
■ MGVO4-P-*-20



1. Differential pressure variation V.S. variation of flow between inlet port and use port
2. Differential pressure variation V.S. variation of between use port and discharge port

Regulated Pressure V.S. Flow Diagram

■ MGVO4-P-*-20

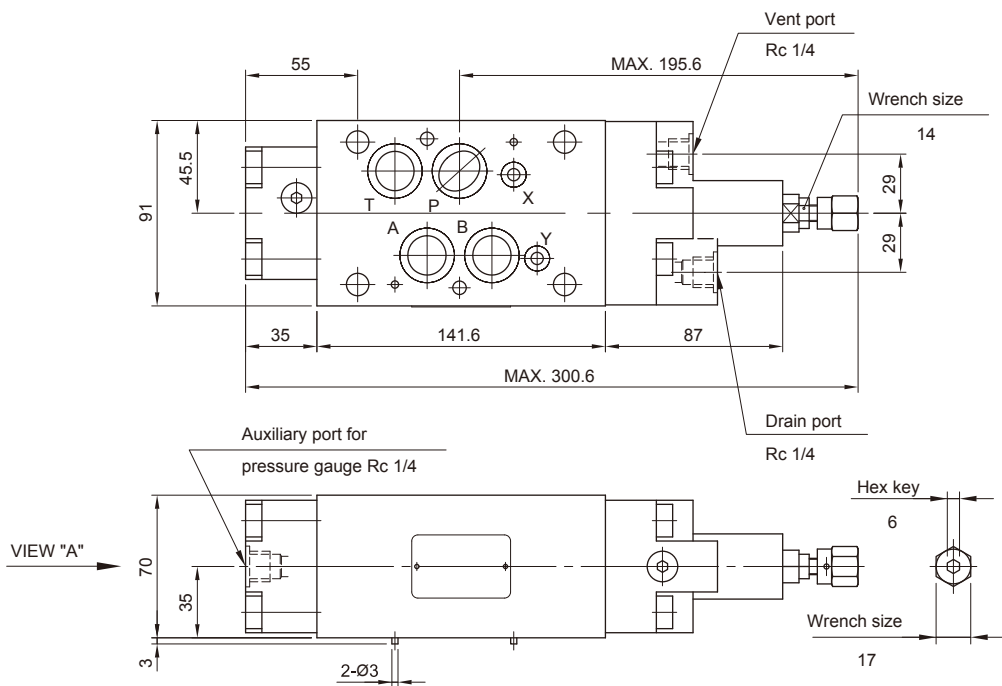


PRESSURE REDUCING VALVE SANDWICH PLATE DESIGN MGVO4 SIZE 16

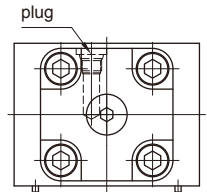
DIMENSIONS :

- MGVO4-P-*-20
- MGVO4-A-*-20
- MGVO4-B-*-20

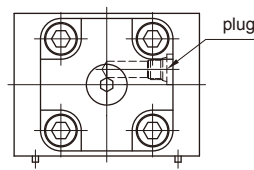
3rd angle projection



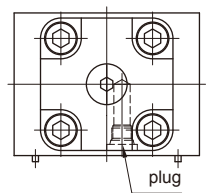
VIEW "A"



MGVO4-P-*-20



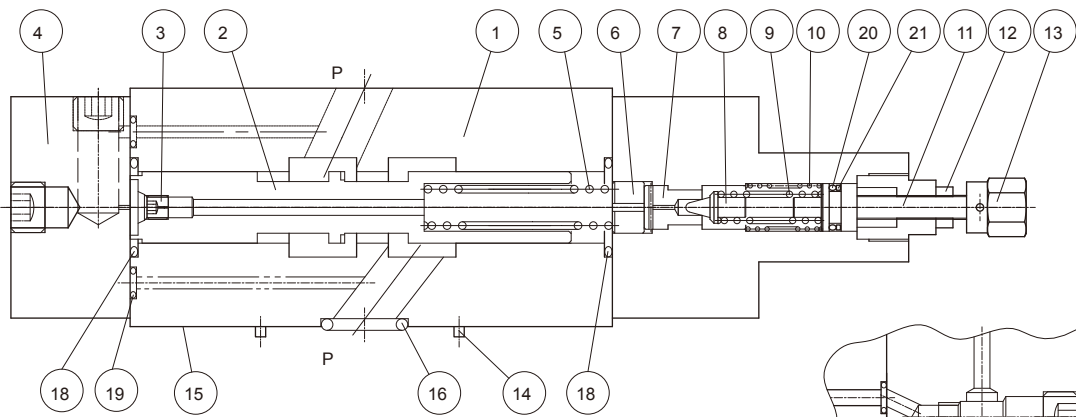
MGVO4-A-*-20



MGVO4-B-*-20

CROSS SECTION DRAWING :

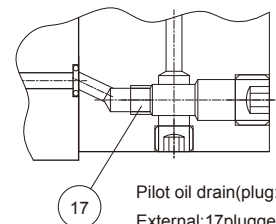
- MGVO4-P-*-20



- 1. Body
- 2. Spool
- 3. Choke
- 4. Cover
- 5. Spool Spring
- 6. Collar
- 7. Seat
- 8. Poppet
- 9. Adjustment spring 1
- 10. Adjustment spring 2

- 11. Setting Screw
- 12. Locking nut
- 13. Adjustment element
- 14. 2 Locating Pins
- 15. Connections to DIN 24340 from A16; 6 through holes for fixing screws
- 16. O-ring: Ports A,B,P,T: AS568-118(NBR,Hs90); Ports X,Y: AS568-013(NBR,Hs90)

- 17. Plug
- 18. O-ring 1B-G25
- 19. O-ring 1B-P7
- 20. O-ring 1A-P11
- 21. O-ring BU-P11



Pilot oil drain(plug: PT1/16")
External:17plugged
Internal:17open