

# DECOMPRESSION TYPE PILOT CONTROLLED CHECK VALVE

## FEATURES :

- The valve allows free flow in one direction and prevents flow in the reverse direction, until operated by pilot pressure to allow the reverse flow.
- Cracking pressure specified is the pressure required to open the valve and allow free flow.



Model: CPDG-06-1-50

## SPECIFICATION :

Model	CPDG-03-**-*-50	CPDG-06-**-*-50	CPDG-10-**-*-50
Max. Flow	40 L/Min	125 L/Min	250 L/Min
Max Operating Pressure	250 Bar		
Cracking Pressure	1: 0.35 Bar		
	2: 3.5 Bar		
Mounting Surface	ISO 5781-AG-06-2-A	ISO 5781-AH-08-2-A	ISO 5781-AJ-10-2-A
Weight	4.5 kg	7.0 kg	12.0 kg
Mounting Bolts	M10 x 45L (4pcs)	M10 x 50L (4pcs)	M10 x 55L (6pcs)

## ORDERING CODE :

CPD G - 03 - 1 - E - 50

1 2 3 4 5 6

**1** DECOMPRESSION TYPE PILOT CONTROLLED CHECK VALVE

**2** SUBPLATE MOUNTING

**3** NOMINAL VALVE SIZE

03: 3/8"

06: 3/4"

10: 1-1/4"

**4** CHECK VALVE CRACKING PRESSURE

1: 0.35 Bar

2: 3.5 Bar

**5** DRAIN

None: External Pilot, internal drain

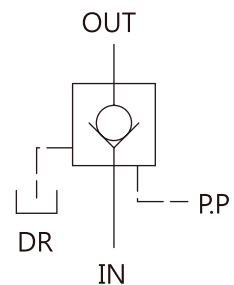
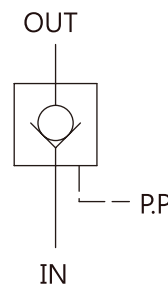
E: External Pilot, External Drain

**6** DESIGN NUMBER

## GRAPHIC SYMBOL :

■ CPDG-\*\*-\*-50

■ CPDG-\*\*-\*-E-50

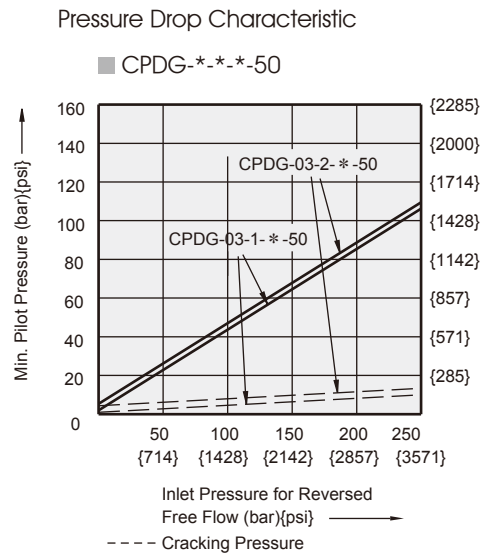
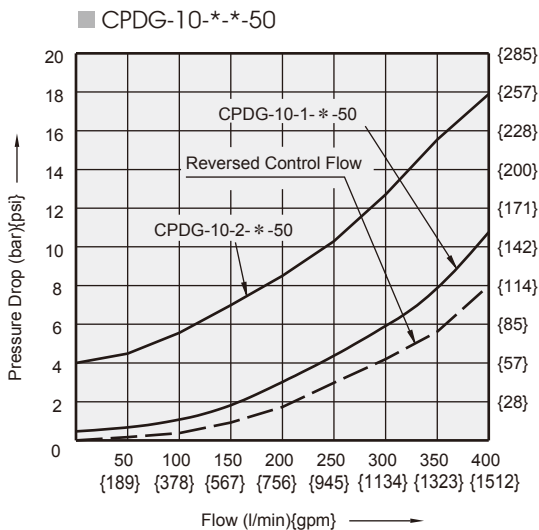
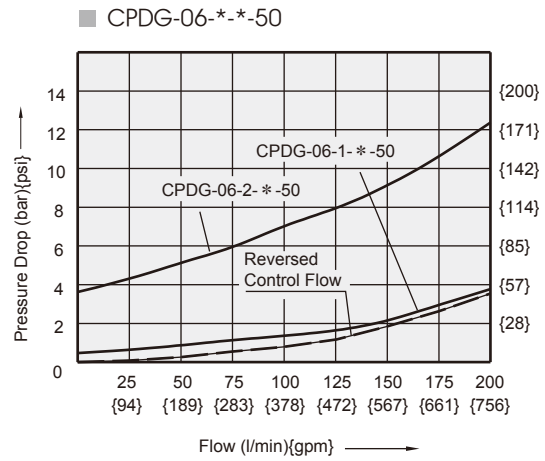
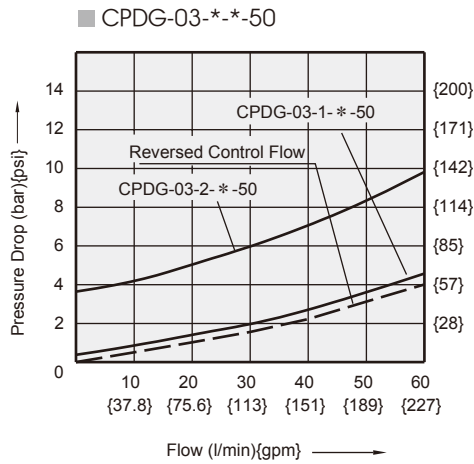


# DECOMPRESSION TYPE PILOT CONTROLLED CHECK VALVE

## PERFORMANCE CURVES:

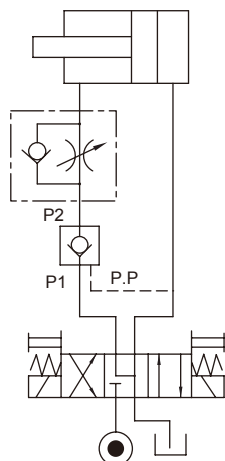
Viscosity of Hydraulic Fluid: 32 mm<sup>2</sup>/s

### Pressure Drop Characteristic

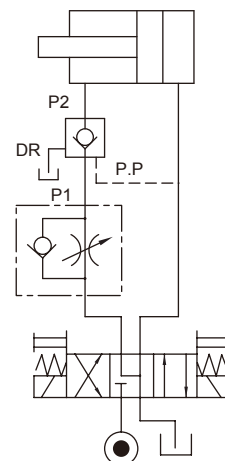


## HYDRAULIC CONFIGURATION:

■ CPDG-\*-50



■ CPDG-\*-50



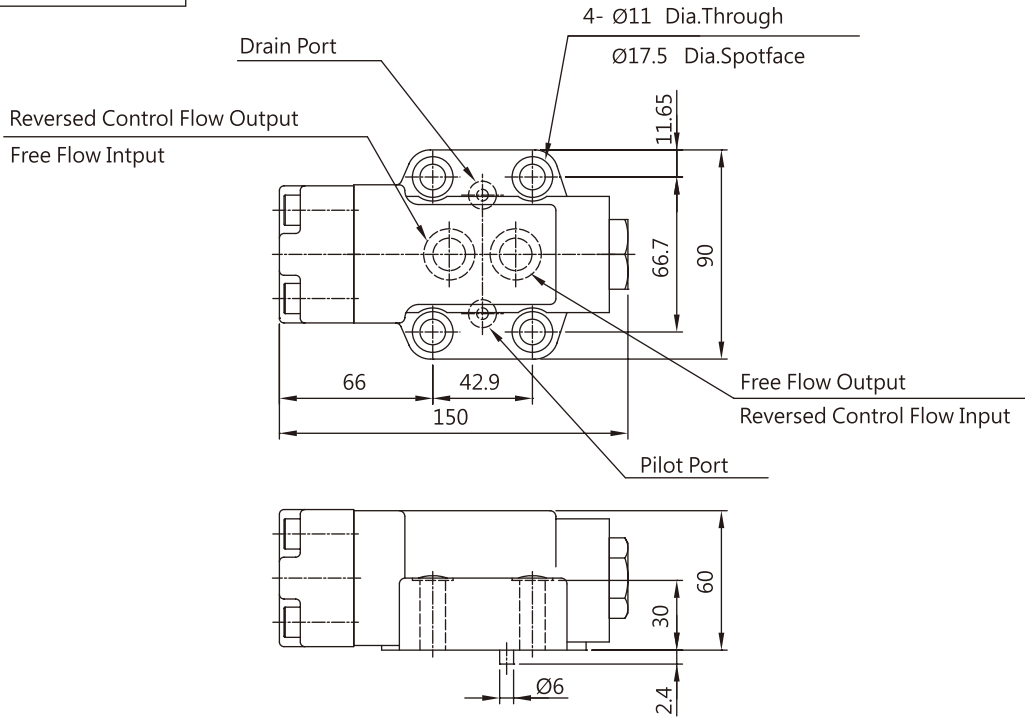
# DECOMPRESSION TYPE PILOT CONTROLLED CHECK VALVE

DIMENSIONS :

■ CPDG-03-\*-\*-50

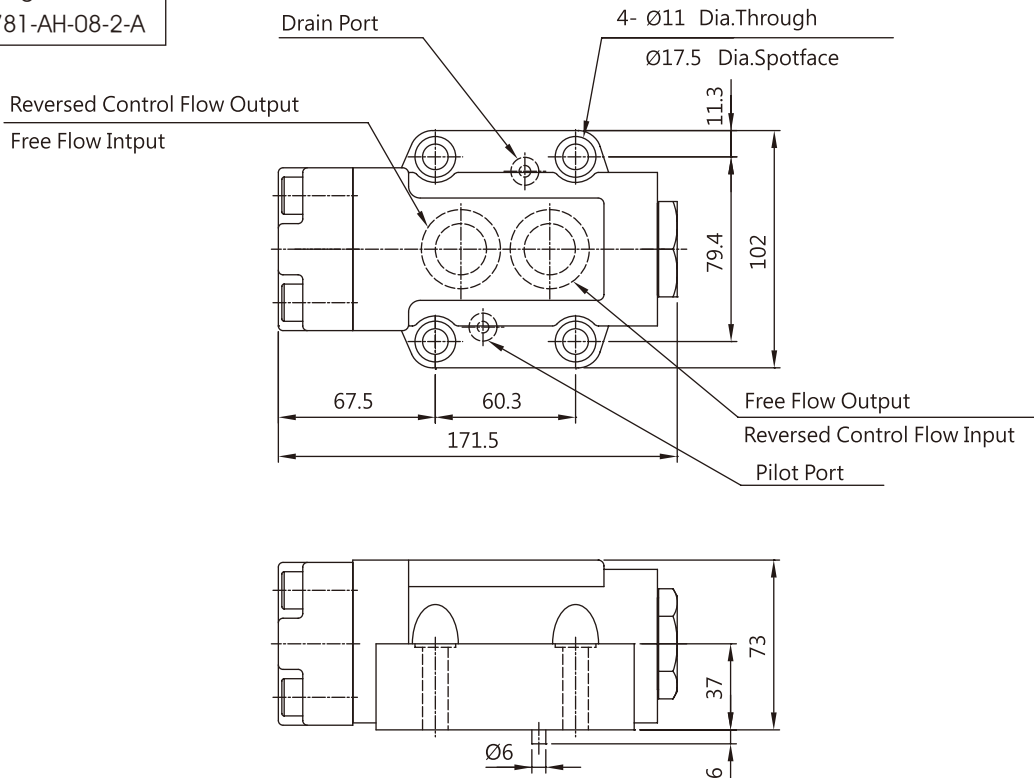
3rd angle projection 

Mounting Surface:  
ISO 5781-AG-06-2-A



■ CPDG-06-\*-\*-50

Mounting Surface:  
ISO 5781-AH-08-2-A



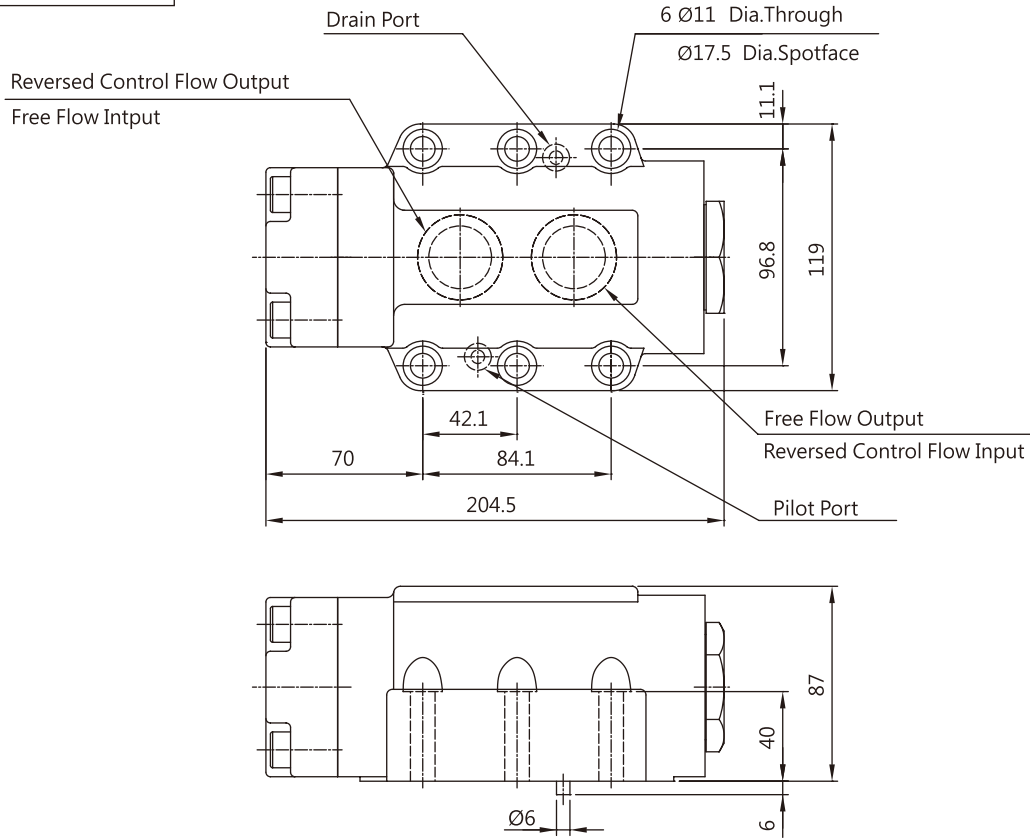
# DECOMPRESSION TYPE PILOT CONTROLLED CHECK VALVE

DIMENSIONS :

■ CPDG-10-\*\*-\*-50

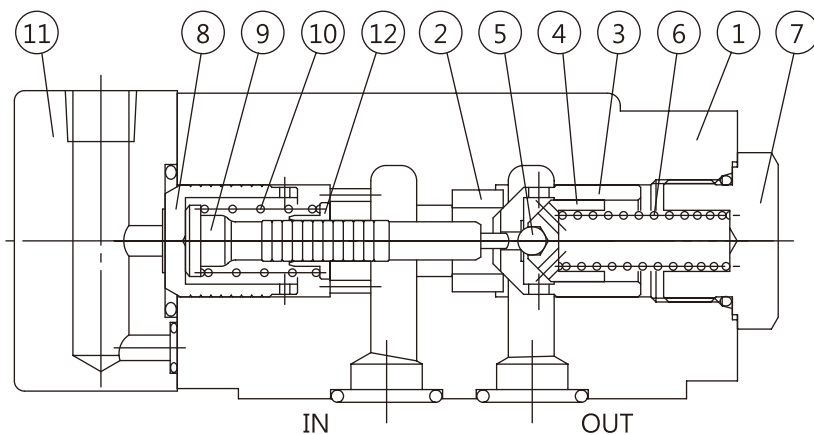
Mounting Surface:  
ISO 5781-AJ-10-2-A

3rd angle  
projection



## CROSS SECTION DRAWING :

■ CPDG-10-\*\*-\*-50



- |               |                     |
|---------------|---------------------|
| 1. Body       | 7. Nut              |
| 2. Seat       | 8. Piston           |
| 3. Poppet 1   | 9. Plunge           |
| 4. Poppet 2   | 10. Return Spring   |
| 5. Steel Ball | 11. Side Cover      |
| 6. Spring     | 12. Spring Retainer |